



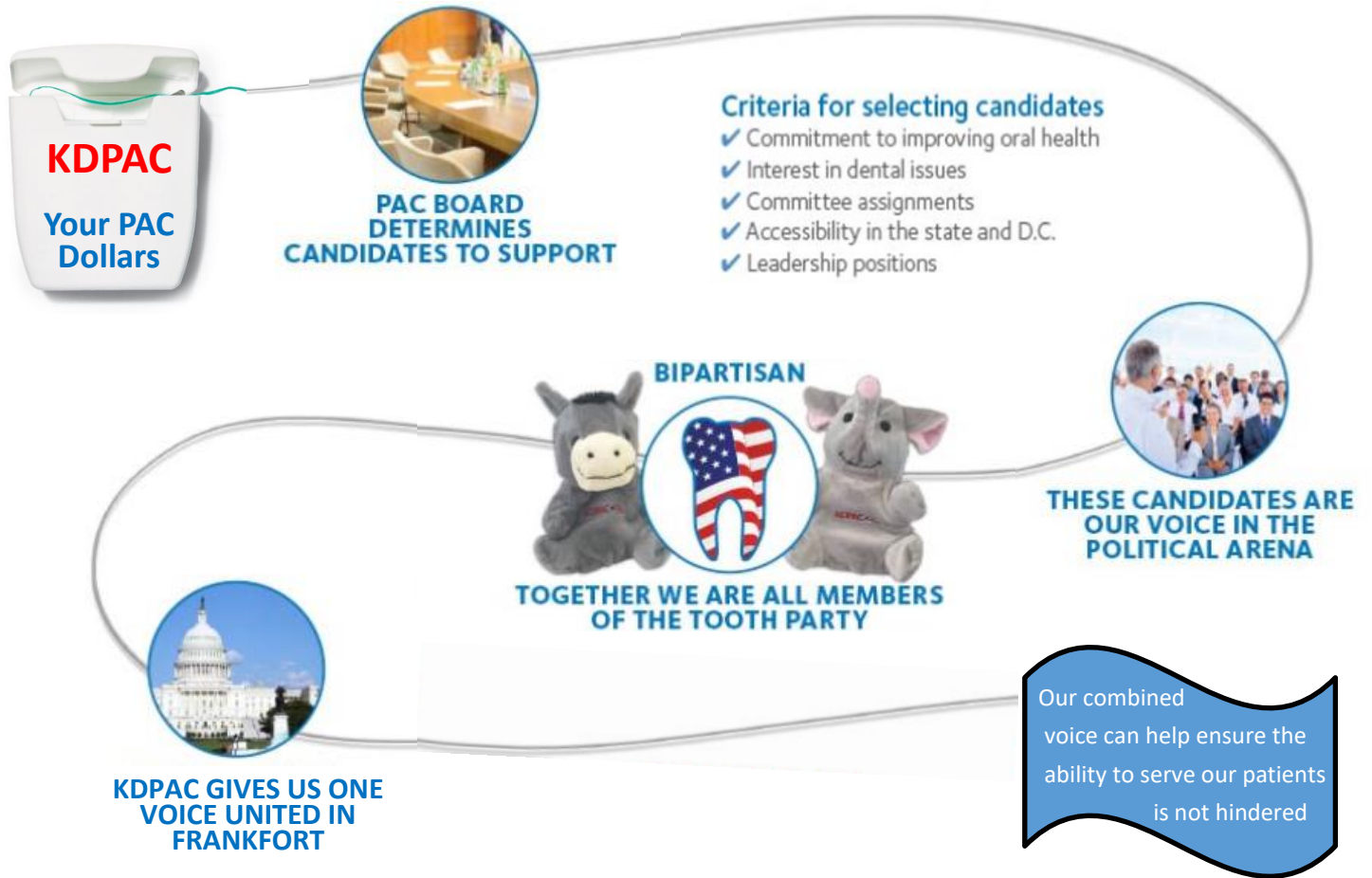
Dentists must speak with

ONE VOICE UNITED

In Frankfort...

The Kentucky Dental Political Action Committee (KDPAC) is a resource that works to protect our profession from the many obstacles created each year.

THE PATH OF YOU PAC CONTRIBUTION



We need the support of all our members to solidify our presence in Frankfort.

JOIN KDPAC TODAY!

KDPAC is a federally registered political committee and the contributions it receives are used to support state candidates and committees. Contributions to KDPAC are voluntary and any person has the right to refuse to contribute without reprisal. The contribution guidelines are merely suggestions and a person may contribute more, less or not at all without concern of favor or disadvantage by the KDA. Contributions are not deductible as charitable contributions for federal tax purposes. If your practice is incorporated, PAC contributions must be written on a personal check. Federal law requires KDPAC to request the name, address, occupation and employer for each person whose contributions exceed two hundred (\$200.00) in a calendar year.

CONTACT

www.kyda.org/kdpac.html