

SAFETY & SIMPLICITY IN ENDODONTICS

an eBook by
Dr. Allen Ali Nasseh



BRASSELER
USA®

Looking to Maximize Safety and Simplicity in Endodontics?

Dr. Ali Nasseh shows you how Brasseler products can help.



Introducing a new multi-segment endo procedural eBook by Dr. Nasseh. Each section investigates a specific aspect of the endo procedure and addresses the clinical considerations and challenges by providing real world solutions for maximizing safety and simplicity. The eBook links to all of the product solutions covered and links to short videos where Dr. Nasseh addresses each topic in greater detail.

ABOUT THE AUTHOR

Dr. Nasseh received his Doctorate in Dental Surgery degree from Northwestern University Dental School in 1994 and completed his postdoctoral endodontic fellowship at Harvard School of Dental Medicine in 1997, where he also completed a Masters in Medical Sciences degree in the area of bone physiology. He is Senior Clinical Instructor and lecturer at the Department of Restorative Dentistry and Biomaterial Sciences at Harvard School of Dental Medicine since 1997 and the former Alumni editor of the Harvard Dental Bulletin.

Dr. Nasseh is the president and Chief Executive Officer for Real World Endo and lectures internationally on endodontic topics. His educational videos have registered over 3 million views based on Google Analytics. He is endodontic editor to several peer reviewed journals and periodicals and a member of the NIH/NIDCR Clinical Needs Advisory Board for the Michigan Pittsburgh, Wyss Center for regenerative Medicine and the Materials and Instruments Committee for the American Dental Association.

Dr. Nasseh is the owner and director of Microsurgical Endodontics, a multi specialty endodontic practice in Copley Plaza Boston, MA.

Looking to Maximize Safety and Simplicity in Endodontics?

Dr. Ali Nasseh shows you how these products can help.

ESX® Modern Access Kit: Endo Access in the Modern Age, Made Easy

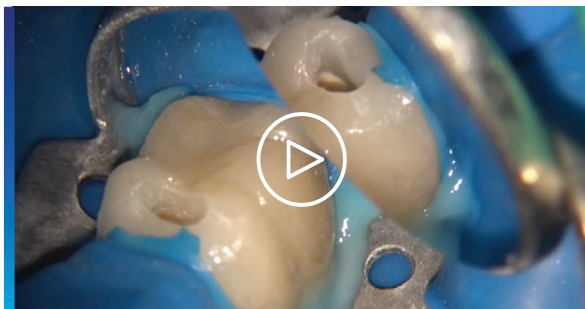


Modern ceramics are difficult to access and traditional burs generate excessive heat and even spark. With so many different burs available, how do you know what to use for endodontic access?

THE BRASSELER SOLUTION

The ESX® Modern Access Kit, your complete system for accessing modern ceramics.

- ▶ **DuraCut™ Diamonds** provide initial access through Zirconia, Lithium Disilicate, and enamel. The round (6801DC) provides a pilot hole while the tapered (6856DC) adjusts the axial wall. The special Chromium Nitrate coating and diamond structure reduces heat buildup, preventing sparking.
- ▶ **SabreCut™ Carbides** provide access through dentin and metal restorations. The single-piece construction reduces breakage and the traversing blades at the tip allow for end cutting and axial wall adjustments. Contrast with the two-piece construction of Great White™ burs.
- ▶ The **Safe-Ended Tapered Carbide** (H269GK) allows for access refinement without fear of gouging the pulpal floor.
- ▶ The **Wheel Diamond** (5909), for use only when the tooth will be restored with a new crown, efficiently takes the tooth out of occlusion and provides a constant reference point for length determination.
- ▶ **Surgical Length Round Burs** (#2 & #4 RA Surg) allow for deep precision adjustments and accessing the orifices.



Great White is a registered trademark of SS White, Inc

[Click here to Watch Dr. Nasseh's Video & Learn More!](#)



- ▶ Visit our website at BrasselerUSA.com or call 800.841.4522. In Canada call 800.363.3838.



Looking to Maximize Safety and Simplicity in Endodontics?

Dr. Ali Nasseh shows you how these products can help.

EndoSync™ Plus and EndoSync™ A.I.: Modern Endo Technology



A low torque, slow speed endo motor is a necessity for NiTi shaping, but traditional endo motors lack the safety and sophistication provided by the latest motor and apex locator technology. With the multitude of new NiTi systems entering the market, clinicians are often asked to “upgrade” their endo motor so they can use these files with the prescribed unique range of motion.

THE BRASSELER SOLUTION

The EndoSync Complete Set, safety and efficiency with sophisticated technology that defies obsolescence.

- ▶ **EndoSync Plus** is the lightest cordless endo motor on the market and is the only cordless endo motor that allows for real-time apex locator readings when paired with the **EndoSync A.I.**
- ▶ When using **EndoSync Plus** with the **EndoSync A.I.** the motor can be set to auto stop when the apex is reached, making shaping safer.
- ▶ Featuring a novel open platform cutting module, the **EndoSync Plus** allows the user to adjust motion settings to any variation imaginable, ensuring that the motor will never be obsolete.



Click here to Watch
Dr. Nasseh's Video &
Learn More!



- ▶ Visit our website at BrasselerUSA.com or call 800.841.4522.
In Canada call 800.363.3838.



Looking to Maximize Safety and Simplicity in Endodontics?

Dr. Ali Nasseh shows you how these products can help.

ESR® CM Endo System: A Safe, Simple and Complete Endo-Restorative Solution



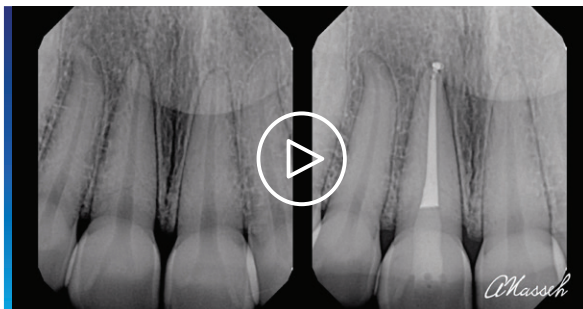
Unlike WaveOne® Gold, ESR CM NiTi files create a constant tapered preparation which makes ESR CM fully synchronized from instrumentation and obturation to post placement. The matching gutta percha and posts fit the ESR CM preparation perfectly, thereby streamlining the procedural workflow and reducing chairtime and cost.

CLINICAL CONSIDERATIONS

- ▶ For maximum safety a reciprocating movement is ideal but most reciprocation systems utilize excessively large preparations that can compromise the long term prognosis of the endodontically treated tooth.
- ▶ For optimal workflow efficiency a comprehensive synchronized system should be used for shaping, obturation and post placement.

THE BRASSELER SOLUTION

- ▶ The ESR CM NiTi System is a minimally invasive, single to two file reciprocating shaping system fully synchronized with a matching obturation and post system. The heat treated NiTi alloy, electro-polished surface, and triangular cross section make ESR CM efficient and safe. The unique reverse cutting flute with a constant tapered design allows for matching gutta percha and posts and creates a less invasive preparation compared to WaveOne® Gold.*



**Click here to Watch
Dr. Nasseh's Video &
Learn More!**

Handpiece Note: ESR CM files can be used in the same reciprocating motion as WaveOne® Gold so they are compatible with Dentsply reciprocating handpieces as well as Brasseler's exclusive EndoSync™ Plus cordless handpiece.

WaveOne® is a registered trademarks of Dentsply Sirona, Inc



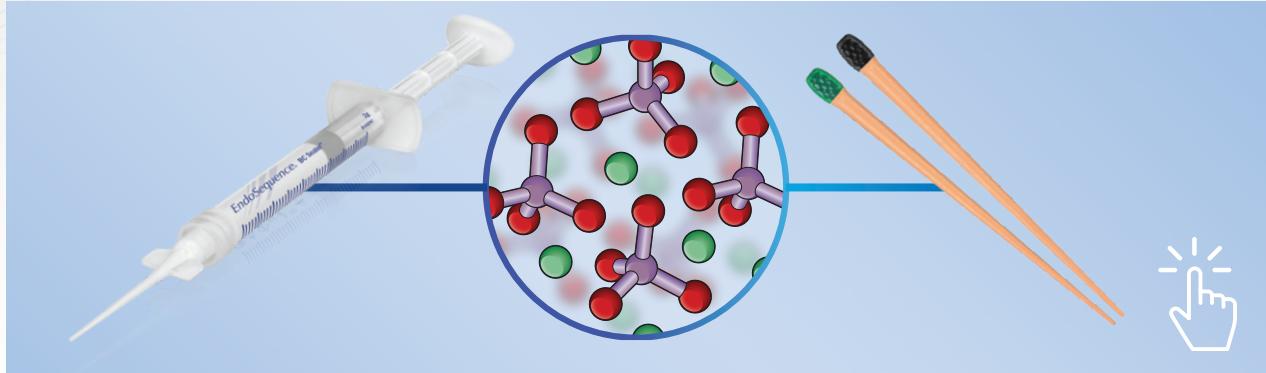
- ▶ Visit our website at BrasselerUSA.com or call **800.841.4522**.
In Canada call **800.363.3838**.



Looking to Maximize Safety and Simplicity in Endodontics?

Dr. Ali Nasseh shows you how these products can help.

EndoSequence® BC Sealer™ & BC Points™ : Fully Bonded Room Temperature Obturation



The limitations of traditional endodontic sealers (namely that they shrink and are non-bonding) have historically dictated that we shape canals with excessively flared preparations to facilitate the placement of gutta percha and compaction. The advent of bioceramic nano-technology has caused a paradigm shift in endodontics where we can now embrace room temperature obturation techniques with the use of fully bonded bioceramic sealers.

THE BRASSELER SOLUTION

Endosequence BC Sealer and BC Points, your system for fully bonded obturation at room temperature.

- ▶ Highly antibacterial, radiopaque, and extremely biocompatible, **BC Sealer** serves to completely seal the root canal and kill any remaining bacteria in the canal.
- ▶ **BC Sealer** is a patented premixed calcium silicate, calcium phosphate bioceramic sealer. It forms calcium hydroxide during the setting reaction and ultimately bonds to dentin through the formation of hydroxyapatite.
- ▶ Coated and impregnated with bioceramic nanoparticles, **BC Points** bond with **BC Sealer** to form a hermetic seal within the root canal.



**Click here to Watch
Dr. Nasseh's Video &
Learn More!**



- ▶ Visit our website at BrasselerUSA.com or call **800.841.4522**.
In Canada call **800.363.3838**.

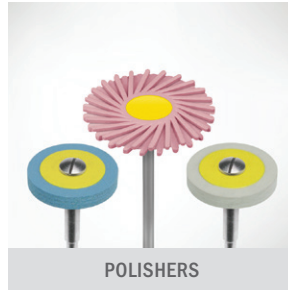




DIAMONDS



CARBIDES



POLISHERS



PROCEDURE SYSTEMS



BIOCERAMICS



Since 1976, our absolute focus has been to develop products and provide services that support the practice of core operatory procedures. Today, Brasseler USA® is the premier dental instrumentation company in North America offering the most extensive selection of dental and surgical instrumentation under one brand.



HANDPIECES



ENDODONTICS



SMALL EQUIPMENT



HYGIENE



HAND INSTRUMENTS



ORAL SURGERY



LABORATORY INSTRUMENTS



Visit our website at Shop.BrasselerUSA.com

To order call 800.841.4522 or fax 888.610.1937. In Canada call 800.363.3838



Invoice or statement prices may reflect or be subjected to a bundled discount or rebate pursuant to purchase offer, promotion, or discount program. You must fully and accurately report to Medicare, Medicaid, Tricare and/or any other federal or State program, upon request by such program, the discounted price(s) or net price(s) for each invoiced item, after giving effect to any applicable discounts or rebates, which price(s) may differ from the extended prices set forth on your invoice. Accordingly, you should retain your invoice and all relevant information for your records. It is your responsibility to review any agreements or other documents, including offers or promotions, applicable to the invoiced products/prices to determine if your purchase(s) are subject to a bundled discount or rebate. Any such discounts must be calculated pursuant to the terms of the applicable purchase offer, promotion, or discount program. Participation in a promotional discount program is only permissible in accordance with discount program rules. By participation in such program, you agree that, to your knowledge, your practice complies with the discount program requirements.